

## **MM36F: 36-hp (27-kW) Power-Dense and Efficient Frameless Electric Motor/Generator**

**Date:** 26 February 2024 (data are subject to updates).

### **Contact:**

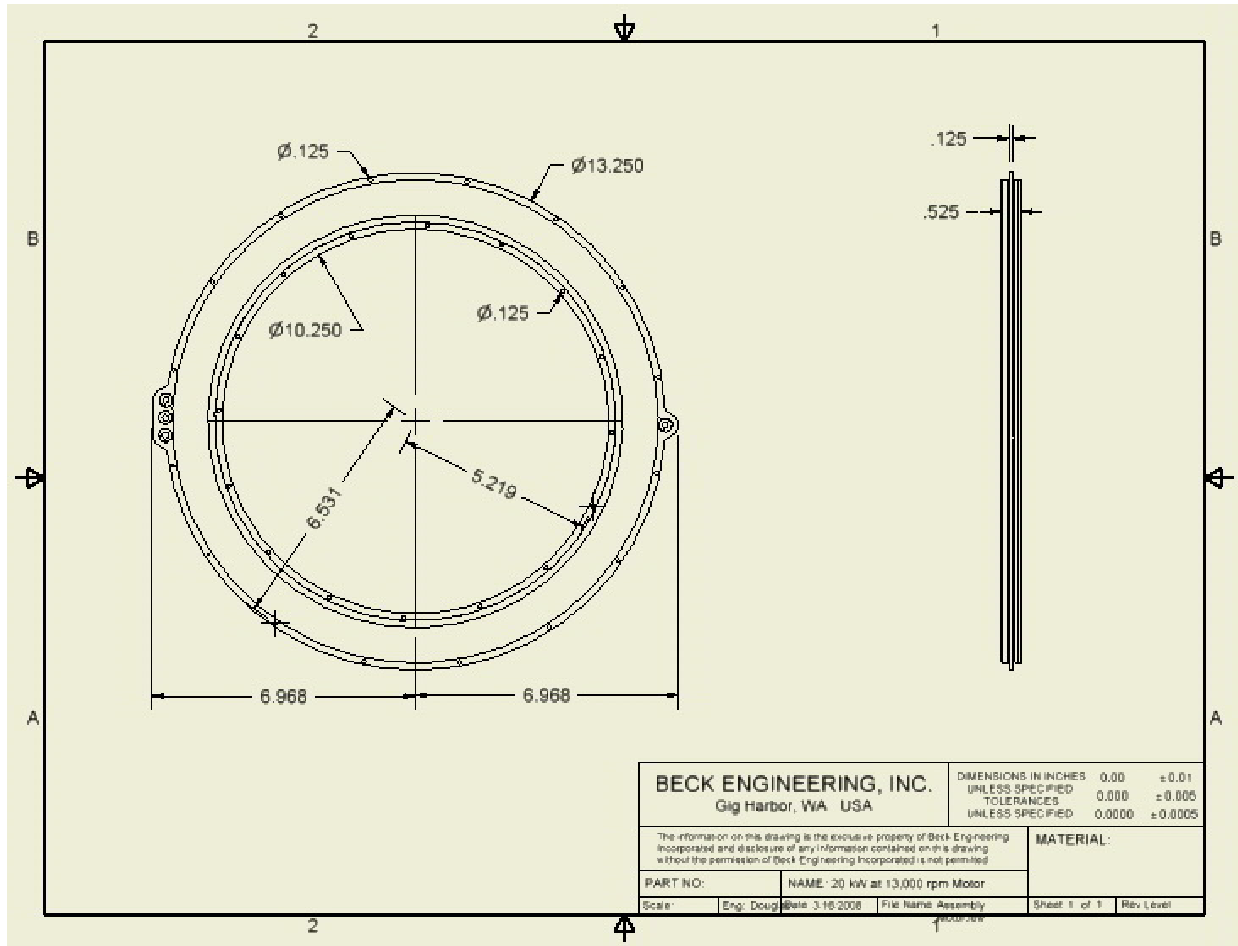
Douglas S. Beck, President  
Mity Motors, Inc.  
9684 Bujacich Rd, Building A, Suite B  
Gig Harbor, WA 98332-8477  
Tel: 253-432-6754  
Email: [dbeck23@aol.com](mailto:dbeck23@aol.com)  
Web: [www.mitymotors.com](http://www.mitymotors.com)



---

9684 Bujacich Rd, Bldg A, Ste B, Gig Harbor WA 98332-8477  
Tel: 253-432-6754; Email: [dbeck23@aol.com](mailto:dbeck23@aol.com); Web: [www.mitymotors.com](http://www.mitymotors.com)



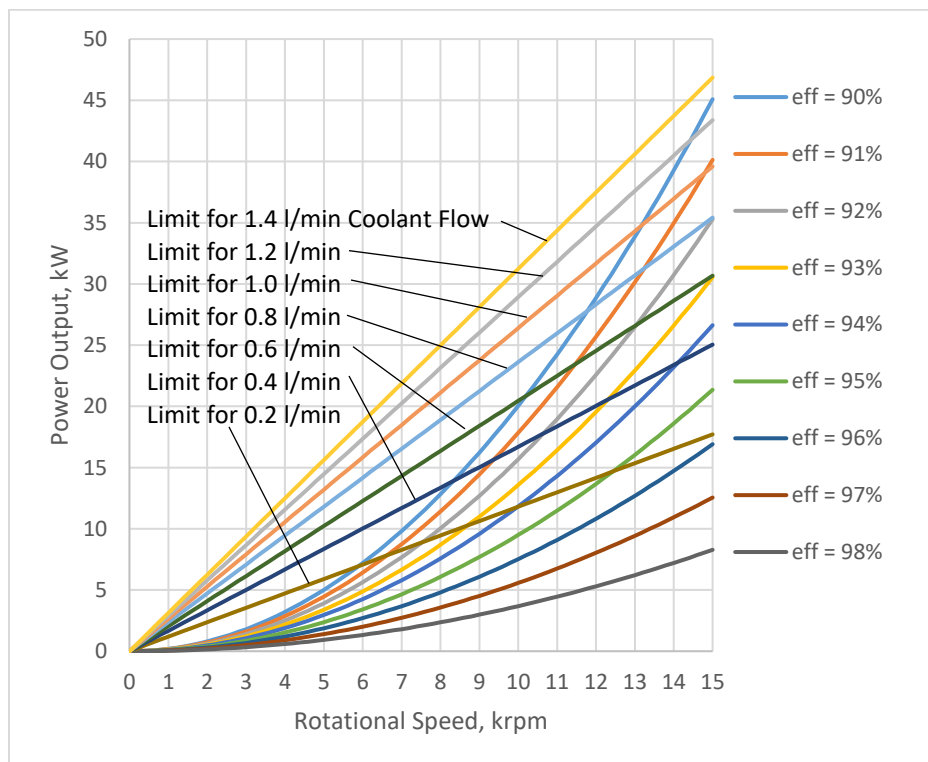
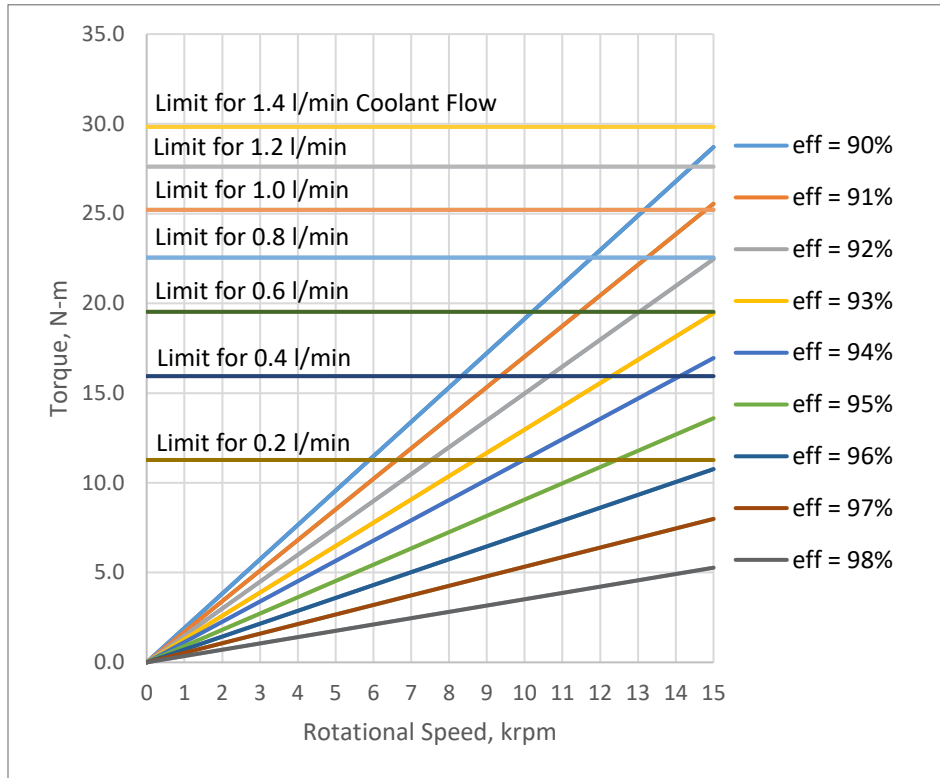


### Design-Point Performance Projections:

| Parameters:                | Values: | Units: | Values: | Units: |
|----------------------------|---------|--------|---------|--------|
| Fan Diameter.              | 0.254   | m      | 10      | in     |
| Maximum Rotational Speed.  | 15,000  | rpm    |         |        |
| Motor Power Output.        | 27      | kW     | 36      | hp     |
| Motor Efficiency.          | 94%     | -      |         |        |
| Weight of Mechanical Unit. | 2.0     | kg     | 4.5     | lbm    |

9684 Bujacich Rd, Bldg A, Ste B, Gig Harbor WA 98332-8477  
 Tel: 253-432-6754; Email: [dbeck23@aol.com](mailto:dbeck23@aol.com); Web: [www.mitymotors.com](http://www.mitymotors.com)

## Performance Projections in Metric Units:



## Performance Projections in Imperial Units:

